



# Scout Enterprise PUMA

## Administrator's Guide

Last edited: 2013-09-30

2. Representation .....	2
1. Overview .....	3
1.1. Starting Scout Enterprise PUMA .....	3
2. Configuring container update via Internet .....	4
3. Defining the scope of the packages .....	6
4. Downloading updated packages via Internet .....	8

© 2018 Unicon Software Entwicklungs- und Vertriebsgesellschaft mbH

This document is copyrighted. All rights reserved. No part of this document may be reproduced or transmitted in any form or by any means, without our express consent. Information in this document is subject to change without notice. We disclaim all liability regarding correctness, completeness and topicality of the information contained herein and any errors or damage resulting from the information provided.

eLux® and Scout Enterprise Management Suite® are registered trademarks of Unicon Software Entwicklungs- und Vertriebsgesellschaft mbH in the European Union and the United States.

All other product names are registered trademarks of their relevant owners.

02-16 02:22

## 2. Representation

The following representations and conventions for instructions are used throughout the documentation:

Representation	Description
<b>Control element</b>	All graphical user interface controls are displayed in <b>bold</b>
<b>Menu &gt; menu command</b>	Whenever running a command involves clicking a series of menus, the single GUI controls such as menu commands or dialog tabs are linked by <b>&gt;</b> .
Value	All data that have to be entered by the user or data that represent a field value are displayed in <code>Courier New</code> . Also, file names and path names are displayed in <code>Courier New</code> .
STRG	Keys to be pressed are displayed in CAPITAL LETTERS.
<Placeholder>	Placeholders in instructions and user input are displayed in <i>italics</i> and in <angle brackets>.
1. Instruction	Procedures to be carried out step by step are realized as numbered steps.
Result	System responses and results are displayed in <i>italics</i> .

### Abbreviations and acronyms

Abbreviation	Description
AD	Active Directory , directory service of Microsoft Windows Server
EBKGUI	Interface of the eLux Builder Kit (component of Scout Enterprise)
EPM	eLux package module ( <code>.epm</code> , software package)
FPM	Feature package module ( <code>.fpm</code> , part of a software package)
FQDN	Fully qualified domain name
GB	Gigabyte
GHz	Gigahertz (processing speed)
HDD	Hard disk drive (flash memory)
IDF	Image Definition File ( <code>.idf</code> )
IIS	Internet Information Services: Microsoft Web server
MB	Megabyte
OU	Organizational unit Unit or group within the organizational structure
VPN	Virtual Private Network

## 1. Overview

PUMA (Package Update Management Agent) provides you with fully automated update processes via internet. You can select the relevant packages which can be used for image definition in ELIAS. For further information about ELIAS see the [ELIAS](#) guide.

- PUMA updates selected packages defined in ELIAS in the background.
- PUMA provides a tray icon, showing the current status of the updating process and letting you start the program.



### Note

PUMA uses the web portal [myelux.com](https://myelux.com) for updating.

---

### 1.1. Starting Scout Enterprise PUMA

---



### Requires

Scout Enterprise PUMA has been installed with the Scout Enterprise Management Suite (Standard).

---

After the installation, you will find the PUMA icon in the systray and a new start menu command called **Puma settings**.

1. Right-click the PUMA icon or click the start menu command **Puma settings**.

*A small window opens.*

2. Click **Update** to start the update process.

*While the update runs, a message is displayed providing the option **Cancel update process**.*

*If you select **Update in background**, the update process runs without user interface.*

*As soon as PUMA has identified updated packages in the internet, the display of the icon will change.*

3. Click **Settings** to adjust the parameters.

## 2. Configuring container update via Internet

1. Click at **Windows Start > Programs > Scout Enterprise > PUMA settings**.  
Now a configuration window opens. In this window you are able to execute the settings for the update process of the containers via internet.
2. Click at the tab **Access database** in order to configure the database in use by the Scout Enterprise Server and for establishing a connection. As long as there is no connection defined, the other registers can not be chosen.
3. Enter your username, the password as well as the paths to the database which is locally saved.
4. Click at **Connect**.
5. Adjust the container paths.  
At least one container paths of five must be entered and the container.ini has to be available in the paths.
6. Click at the tab **Internet**.  
Enter your [www.mylux.com](http://www.mylux.com) log in data (username and password).
7. Adjust the desired Proxy settings and the corresponding port.
8. Click at register **Scheduler**.
9. Check the **Check for updates** option, if you want to update automatically.  
You can specify those update settings.
10. Choose in which time period updates should be checked automatically. Choose from the following options:  
**Every day / Every week / Every months** – Time interval for scheduler. Every month means 28 days, thus resulting in the same day of the week.  
In the case one of this three options is activated, either the time point of the latest update nor the time point of the next planned update is shown.
11. Check the **On error repeat each xx minutes** option, and then enter the desired period of time in minutes.  
The update process is repeated. This is an important option if the technical portal [www.mylux.com](http://www.mylux.com) is not accessible.
12. Check the **Do missed updates on system start** option.  
The update process is to be executed immediately after starting the device, if the device was switched off on regular planned time of updating.
13. Click the **Configuration** tab for configuring the packages defined in ELIAS.  
Requirement: Note that your user data from [www.mylux.com](http://www.mylux.com) must already be registered.
14. Click the **Advanced** tab.
15. Choose whether the beta version of the packages should be recognized when updating or not.  
Choose from the following options of the updating packages and define, how beta versions are to

be handled regarding an update: **..ignore beta versions of packages / ...include / ...-configure for each package.**

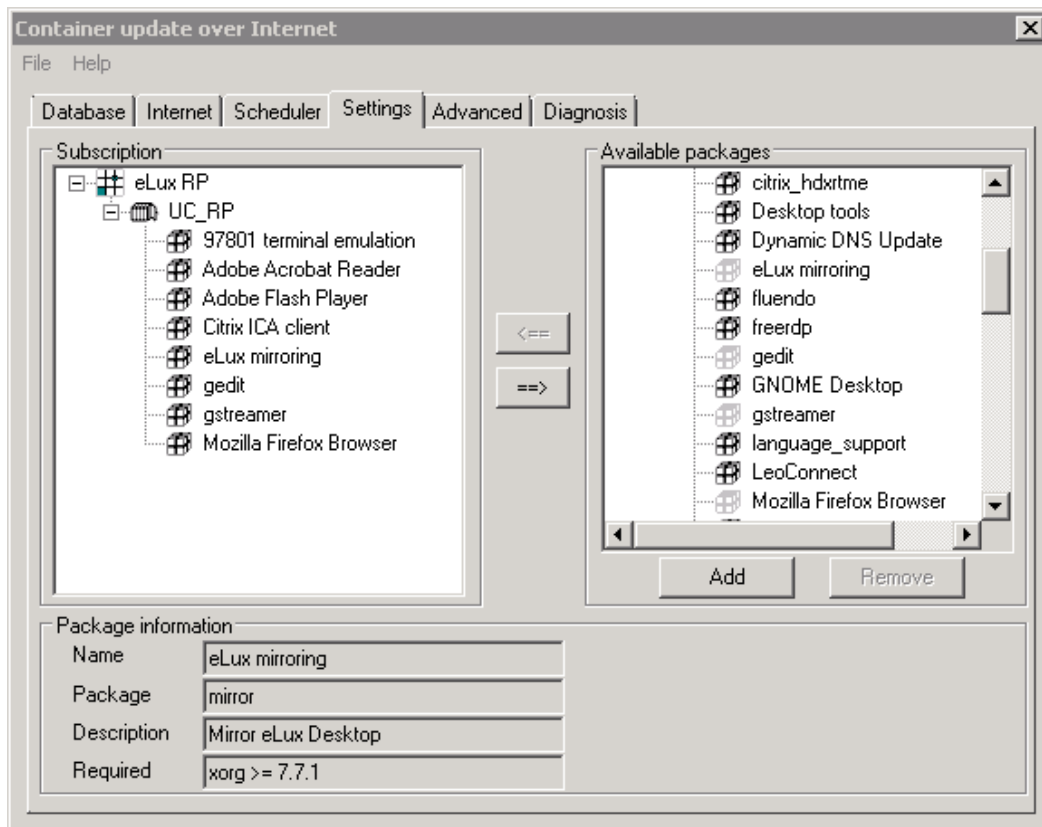
16. Choose the desired **Update action**. The following options are available:

Option	Description
Inform user	The physical appearance of the icon in systray the changes, in the case new packages are available.
Do update automatically	The packages are automatically updated in the background.

17. Click **Diagnosis**.
18. Choose in the section **Program Diagnosis** the settings for the diagnosis of the control program as well as for the local deposition of the diagnosis file.
19. Choose **View diagnosis file**, for checking this file or chose **Delete diagnosis file** in order to work with a new diagnosis file.

### 3. Defining the scope of the packages

On the **Settings** tab, you can define which software packages are to be downloaded from the Internet and which not. When the Settings tab is active, the parameters in the tabs **Database** and **Internet** are blocked, since these must be accessible for defining settings. You need to close the dialog and reopen it in order to change parameters in the tabs **Database** and **Internet**. The **Subscription** list field shows the subscribed packages, the **Available packages** list field on the right shows the packages available online for the container selected by the user.



1. For adding a container click at **Available packages > Add** in the right list, however you have to choose at least one container.
2. Make sure that you have already adjust a paths under **Database > Container paths**. More details regarding this setting can be found at step number 5 in the chapter [Updating container via the internet](#).
3. Click **<==** and **==>** for subscribing single packages or all packages.  
**Or:** Use the following shortcuts for taking beta versions of the packages under consideration:

Button	Shortcut	Description
<b>==&gt;</b>	ENTF or CTRL + → located in the left list	Removes single or all packages.

Button	Shortcut	Description
<==	CTRL + ← located in the right list	Single or all packages are subscribed.
<b>Remove (right list)</b>	DEL	Deleting single or all available packages.

- Click at the container name or the paths name in order to receive further information about the container chosen or the package chosen.
- If , on the **Advanced** tab, the **Configure for each package** option is selected, a right click allows to configure whether the beta versions of a package are to be included in the update process.

## 4. Downloading updated packages via Internet

During update process all packages updated and available are offered for download. Hotfixes are shown in red color and beta versions are shown in yellow color. If desired, you can exclude any single package from download. The currently running update process is indicated by the rotating systray icon. To cancel the update process, right-click the icon.