



Scout Enterprise Configuration File Editor

Administrator's Guide

Last edited: 2014-02-15

1. Overview	2
1.1. Starting Scout Enterprise Configuration Editor	2
2. Configuration files	3
2.1. Properties of a configuration file	3
3. File attributes	4
4. Defining an import filter	5
5. Menu commands	6

© 2018 Unicon Software Entwicklungs- und Vertriebsgesellschaft mbH

This document is copyrighted. All rights reserved. No part of this document may be reproduced or transmitted in any form or by any means, without our express consent. Information in this document is subject to change without notice. We disclaim all liability regarding correctness, completeness and topicality of the information contained herein and any errors or damage resulting from the information provided.

eLux® and Scout Enterprise Management Suite® are registered trademarks of Unicon Software Entwicklungs- und Vertriebsgesellschaft mbH in the European Union and the United States.

All other product names are registered trademarks of their relevant owners.

11-27 05:06

1. Overview

The Scout Enterprise Configuration File Editor is an integral part of the Scout Enterprise Management Suite. The Scout Enterprise Configuration Editor helps you modify and manage the configuration files exported from the Scout Enterprise Console, independently from the Scout Enterprise database. After successful modification in the Scout Enterprise Configuration Editor, import the configuration files back to the Scout Enterprise Console.

1.1. Starting Scout Enterprise Configuration Editor

- ▶ Use the Windows **Start** menu and click **Scout Enterprise > Configuration File Editor**.

or

- ▶ In the Windows Apps view, click **Scout Enterprise > Configuration File Editor**.

For information on how to export and import configuration files, see the **Scout Enterprise** guide.

2. Configuration files

The following configuration files can be modified:

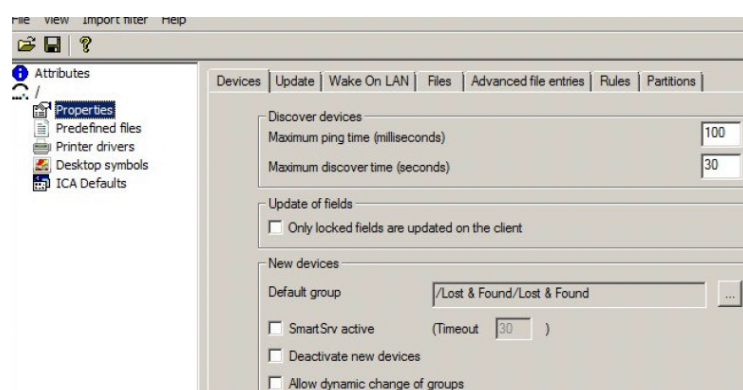
Description	File extension
Device configuration ¹ of an organization unit (OU) or base device configuration	.oustp
Device configuration of an individual device	.devstp
Advanced device configuration of an OU or Advanced options	.oupro
Application properties of an OU or top level	.appro
Device properties	.devpro

2.1. Properties of a configuration file

When you open a configuration file, the configuration editor displays a list of the file properties on the left. The properties correspond to the options of the relevant configuration.

- ▶ To edit a property, select the relevant element in the list.

On the right, the corresponding options are shown.



¹formerly Setup

3. File attributes

An **Attributes** tab is created for each file, regardless of the file content.

Data	Description
Name	Name of the OU, device or application
Type	File type such as base device configuration or device configuration
Location	OU where the data are exported from
Created	Date and time of the export
Last Modified	Datum and time of latest change
File	File name and path of the open file
Advanced Options	Some configuration files use references to the Advanced Options . Printer driver names in device properties refer for example to the printer driver list in the Advanced Options . In this case, you can specify the configuration file to be used.
Assigned Setup	Some configuration files use references to other device configuration files. Printer settings in device properties refer for example to the printer list in the corresponding OU device configuration file. In this case, you can specify the device configuration file to be used.
Comment	Any text to be saved with the file

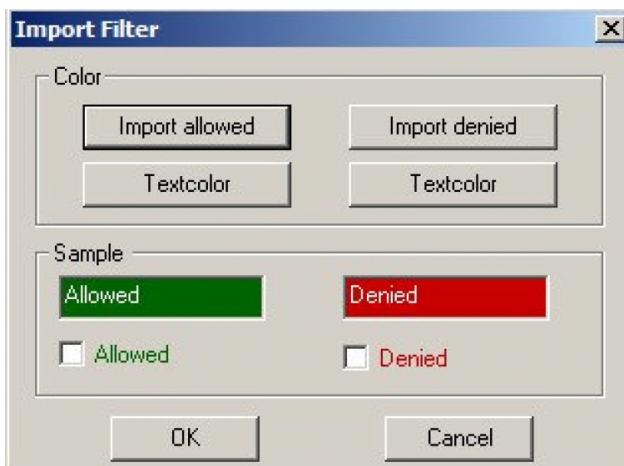
4. Defining an import filter

In some cases, it might be suitable to import only parts of a configuration file. To do so, define an import filter.

1. Click **Import Filter > Use Import Filter** to define an Import Filter.

All elements to be imported are shown in green. Elements that should not be imported, are shown in red.

2. Click **View > Import filter > Text color** to change the color settings.



3. To change the import status of an element, press CTRL+SHIFT and click the element in the dialog.
Or:
Click **Import Filter > Mark by mouse**.
4. Click **Import Filter > Import all** to enable all elements on all tabs.
5. Click **Import Filter > Import nothing** to disable all elements on all tabs.



Note

Some tabs allow to deny or allow the entire all fields in one step. To do so, click the tab name.

5. Menu commands

Option	Description
File / Open	Open a configuration file
File / Save	Save all changes in the current configuration file
File / Close	Close the current configuration file
File / Terminate	Close the Scout Enterprise Configuration File Editor
View / Language	<code>Default</code> uses the language of the operating system. After you change the language, restart the program.
View / Toolbar	Show / hide the toolbar
View / Status line	Show / hide the status bar
View / Import filter	Set the colors for the import filter
Import Filter / using import filter	Activate / deactivate import filters If you deactivate the import filter and save the configuration file, all import filter settings are deleted in the configuration file.
Import Filter / import all	All fields of all tabs are selected as importable .
Import Filter / import nothing	All fields of all tabs are selected as non-importable.
Import Filter / mark by mouse	Select individual fields via mouse as importable or non-importable. Alternatively, press <code>CTRL+SHIFT</code> , and then click the relevant fields.
Help / Info	Show the current version number of the Scout Enterprise Configuration Editor
